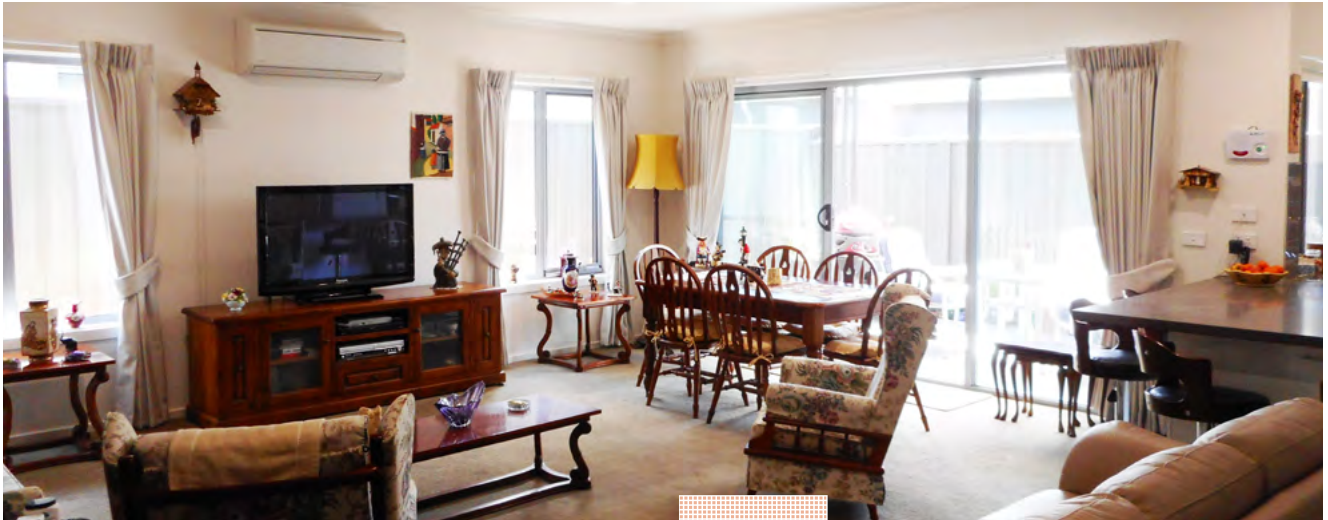


Villa 23 – Grevillea Design

Just 12 months old! This established home, with as new interior finishes, is the only one of its kind available in the village and won't last.



You'll love living at Casey Grange Village, conveniently located just 5 minutes from Cranbourne town centre and its shops and services.

Your social life will never be better. Racing types will enjoy frequenting the Cranbourne Turf and Harness Racing Club. Gardeners can inspire their green thumbs at the Royal Botanic Gardens, or Cruden Farm in Langwarrin; both are just 10 minutes away.

You can tee off at one of the many golf courses in Cranbourne, including Settlers Run and Ranfurle Golf Clubs, or enjoy a wine over dinner at the Amstel Club. Further afield, indulge in glorious food and wine on the Mornington Peninsula, just 20 minutes away. You may prefer a day trip to visit the fairy penguins at Phillip Island, or stock up on local produce from the Gippsland markets further down the road.



Villa 23 offers:

- 2 double bedrooms
- Master bedroom with walk-in robe and ensuite
- Built-in robes in the second double bedroom
- Spacious second bathroom
- Double garage with remote control and internal access
- Large open-plan kitchen, living and dining
- Separate study
- Reverse cycle heating and cooling
- Storage area
- Private courtyard and front veranda
- Established gardens
- Quality fixtures, fittings and blinds
- 24 hour medical emergency call system
- Well positioned TV, internet and power points
- Secure fly screen door to front door and laundry door
- Laundry with separate external access

Call today to inspect. This won't last!

Free call: 1800 998 900

